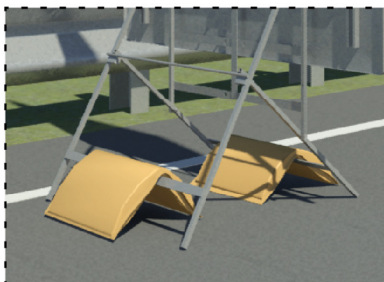


"M17" Stand



1

	Dimensions (H / L / W): 206,5 x 74,5 x 3,5 cm		Construction materials: iron
	Weight: 10,9 kg		External surface treatments: fire painting



// Product Description //

The structure of the stand is made of iron tubular.

The structure is composed of a "base" with opening to the deck and a vertical part called "supporting signage" with an hole for the application of the signs.

The lower part of the stand allows to get a good stability that can be increased with orange bags.

The opening is bound by two joints that allow to put the stand in vertical position.

At the top of the stand there is a bracket which allows the application of a flashing light.

The stand is made in order to reduce space footprint and facilitating greater convenience and ease of use; all these facilitations increase the security of the workers.

// Working Description //

The stand can guarantee the stability of the sign in any road condition, the lower edge of the signal is conformed to the italian reference standards.

The stand allows the installation of the following signs:

- sign 90x135 cm
- adding panel 90x30 cm
- special signs

// Mechanical Characteristics //

Stand structure made of iron tubular square with section 15x15 mm

// Packaging //

	Dimension: 80x120x h 220 cm
(pallet - 40 pcs)	weight: 450 kg

// Norms //

- Article 21 of the Road Code
- Article 30 regulation for execution and realization of the Road code
- Ministerial Decree Of July 10, 2002 published in the Official Gazette no. 226 of 26 September 2002