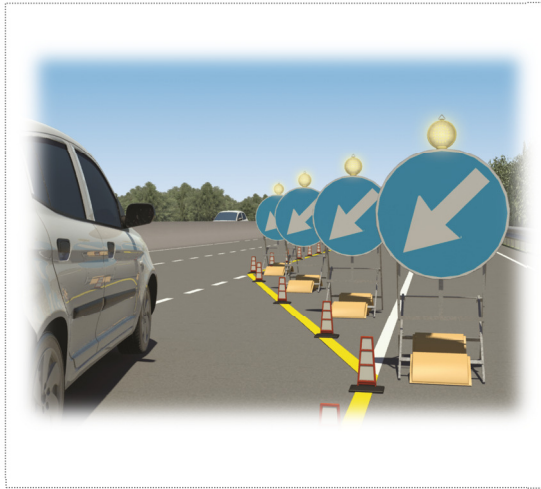


Flashing Light "E-One Yellow"



	Certifications: Ministerial Approval		Power supply: 6 V _{dc}		On/off switch: yes
	Light source: 3V yellow led		Type of battery: nr. 2 4R25 batteries of: 7 Ah / 25 Ah / 45 Ah		Dimensions (H / L / W): 36,5 x 20 x 9,5 cm
	Light emission: standard / flash / triflash		Duration: standard 120h/430h/780h flash 1000h/3600h/6600h triflash 390h/1300h/2500h		Weight: 0,7 Kg
	luminous intensity: UNI EN 12352 (class L8G)		Twilight: yes		Lenses: Fresnel lens



Product Description

The E-ONE warning light yellow is composed of a transparent lens and orange battery holder base. The warning light has an area equal to 314 cm² making it visible even at great distances. Moreover, the particular shape of the lens, that uses theories of modified Fresnel, allows to have optimum light uniformity over the entire surface. This particular configuration is able to guarantee the flashing light very high intensity of light while using a single LED. This feature ensures a very low consumption, thus grants a longer battery life. At the top, the lens has a triangular attachment for installation on hooks and/or specific supports. In addition, the body of the flashlight is equipped with slide for the application of a bracket. The lower part holds the housing for the base, enabling 360° rotation. This enables the operator to focus the light source in the desired direction. The base is made up of the black lower support and an orange upper casing connected together and secured with a central plastic screw. The base contains 2 batteries, the electronic circuit and the on/off switch can be reached from the outside using the specially supplied key; the back has a slide connection for application of the universal securing bracket.

Operating Description

Warning lights are indispensable in all road work-zones, supplementing normal signals at night and in cases of poor visibility. They are particularly practical and easy for the workers to use. To operate correctly, the warning light can be positioned using the triangular connection set on the lens, the rear universal bracket and/or special supports.

Mechanical Characteristics

- Lens in transparent methacrylate
- Back black lens in polypropylene
- Base in polypropylene

Norms

- Article 21 - 41 of the Road Code
- Article 36 - 39 - 71 of Regulation Enforcement and implementation of the Road Code
- Ministerial Decree Of July 10, 2002 published in the Official Gazette no. 226 of 26 September 2002
- European Directive 2004/108/EC and the CE marking
- In compliance with EN 12352 with light intensity is in category L8G

Packaging

	Dimension: 60x42,5x h 39 cm weight: 9,5 kg
	Dimension: 80x120x h 170 cm weight: 240 kg

accessories		Code: 202000059	Code: 200300016
		Code: 200300022	Code: 200300026
		Code: 200300038	