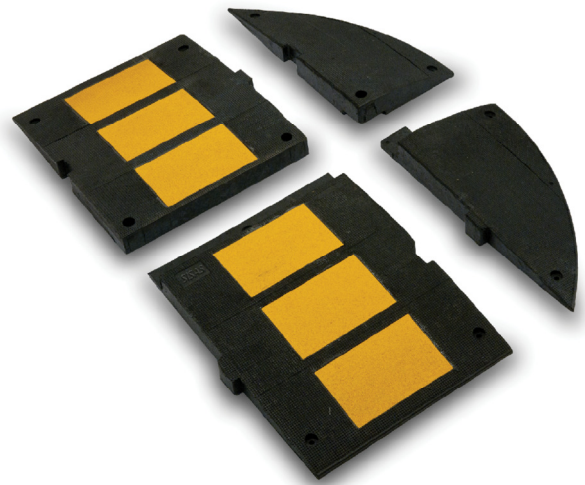


h 7 cm Rubber Speed Moderator



	Dimensions (H / L / W): total speed moderator: 7 x 120 x 50 cm insert: 24,6 x 15,8 cm total terminal: 7 x 120 x 30,7 cm		Construction materials: High elasticity vulcanized rubber product
	Weight: total speed moderator: 33 kg total terminal: 14,5 kg		External surface treatments: application of 6 elastoplastic yellow reflective inserts

Code: 109617311 - 7 cm speed moderator male
 Code: 109627311 - 7 cm speed moderator female
 Code: 110117000 - 7 cm male terminal
 Code: 110127000 - 7 cm female terminal



/ Packaging /

 (pallet - 56 pcs)	Dimension speed moderator (male): 100x120x h 100 cm weight: 940 kg
 (pallet - 56 pcs)	Dimension speed moderator (female): 100x120x h 100 cm weight: 940 kg
 (pallet - 100 pcs)	Dimension male terminal: 80x120x h 100 cm weight: 740 kg
 (pallet - 100 pcs)	Dimension female terminal: 80x120x h 100 cm weight: 740 kg

/ Product Description /

Speed moderator is made of convex profiled vulcanized rubber, with high elasticity, high resistance to the hurts and crushes of the vehicles.

To obtain a better visibility during the night, the speed moderators are integrated with elastoplastic yellow color tape inserts.

In the upper side the speed moderator and the terminal have anti-slip parts, besides their lower side shape facilitates the water flow. Application to the ground is made through n.6 expansion fixing screws.

The terminal is made of convex profiled vulcanized rubber, with high elasticity, high resistance to the hurts and crushes of the vehicles.

Thanks to its slope the terminal (lateral section) must be applied on the sides of the speed moderator, respecting the joints to eliminate the difference in level due to the laying of the speed moderators on the ground that is made by n.5 expansion screws.

/ Working Description /

Rubber speed moderators can be installed on the streets with a speed limit of 30 km/h or less, on residential streets, in public and private parks, in residences, etc.

They can be installed in sequence and must be signaled.

Rubber speed moderators must form an alternating yellow and black stripings parallel to the direction of the street, being of equal width as far as signs and intervals are concerned, and be visible both day and night.

/ Miscellaneous /

The speed moderator must be hardly installed on the ground using appropriate screws, to avoid shifts or detachments, It must be also easily removable.

/ Norms /

- Article 42 of the Road Code
- Article 179 Regulation for execution and realization of the road code

